

Manufacturing Packaging Solutions

ITB  PACKAGING LLC



Innovation In The Box

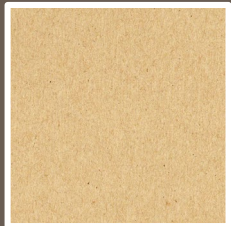
We are a new kind of manufacturer, revolutionizing the packaging industry with innovative and exceptionally engineered Expendable and Returnable packaging divider systems. We value long-term partnerships with customers and want to lead the way in environmental responsibility.

Based in Holland, Michigan, our team has decades of experience in manufacturing and distribution management. Early on we recognized the potential for packaging system innovation, and have developed advanced technologies and divider products powerful enough to revolutionize the industry. We keep it simple: innovative design, cost-effective manufacturing, superior customer service, world-class processes, and total quality management.

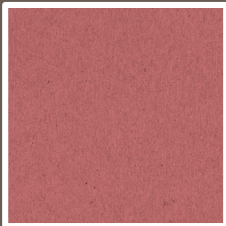
Capabilities

- Expendable Solutions
- Returnable Solutions
- ISO 9001 - Certified
- Manufacturing
- Engineering
- Assembly
- Design

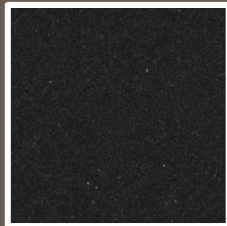
Materials



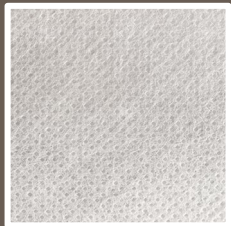
20# Smooth Kraft
Strong and flexible paper for most parts; recyclable.



20# Smooth Kraft Nomar
Smooth kraft with added part protecting coating; recyclable.



20# Smooth Kraft ESD
Smooth kraft with added part electrostatic discharging coating; recyclable.



Elite Fabric
Spunbond PP provides protection for Class A surfaces.



Blue Plush
Brushed Polyester fabric; highest durability and surface protection.



LX 15025
Spunbond PP fabric is durable and cost effective.

Contact



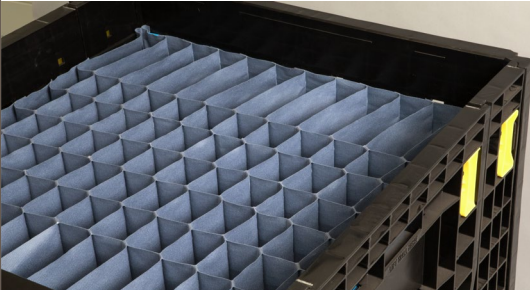
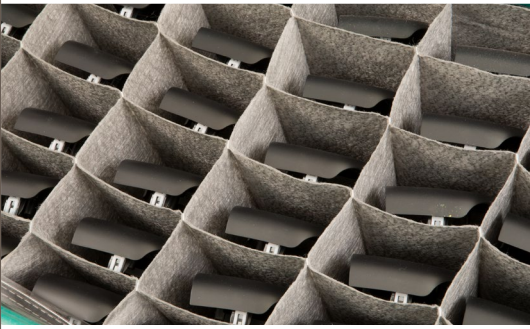
147 East 6th Street
Holland, MI 49423



616-392-3480



www.itbpackaging.com



Lower your supply chain cost



Optimize your supply chain to move more with less



Cut your setup and assembly time in half



Dividers that fit your product and increase density



Utilize less material and resources



Materials for all levels of protection

Innovation In The Box

Based in Holland, Michigan, our team has decades of experience in manufacturing and distribution management. Early on we recognized the potential for packaging system innovation, and have developed advanced technologies and divider products powerful enough to revolutionize the industry. We keep it simple: innovative design, cost-effective manufacturing, superior customer service, world-class processes, and total quality management.

Sensitive Surfaces

ITB's solutions provide the highest level of protection for sensitive surfaces, such as lighting, mirrors, lens, and touchscreens. Our newest product line made with Evolon has a compact fiber structure making it both strong and exceptionally soft. This proprietary threadless production process compared to sewn technology eliminates the interaction between your sensitive products and beading of threads

At ITB Packaging we offer a wide array of ergonomically designed packaging solutions that are collapsible and customizable to a wide variety of parts. Our design team has the knowledge and talent to find a packaging solution for your company's needs, regardless of the products shape and size.

Capabilities

- Expendable Solutions
- Returnable Solutions
- ISO 9001 - Certified
- Manufacturing
- Engineering
- Assembly
- Design

Materials



Evolon
Thread-free Spunbond;
highest protection for
sensitive surfaces .



Blue Plush
Brushed Polyester fabric;
highest durability and
surface protection.

Contact



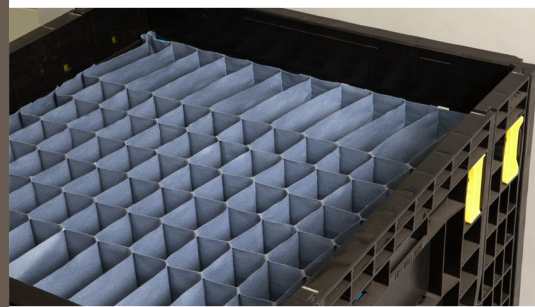
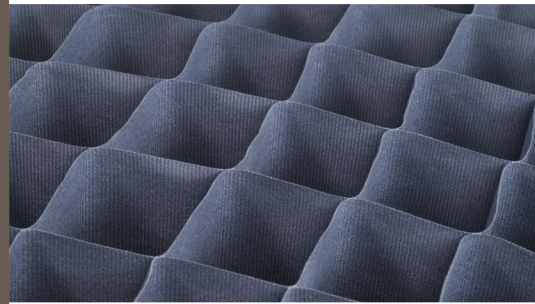
147 East 6th Street
Holland, MI 49423



616-392-3480



www.itbpackaging.com



Lower your supply chain cost



Optimize your supply chain to move more with less



Cut your setup and assembly time in half



Dividers that fit your product and increase density



Utilize less material and resources



Materials for all levels of protection

Why Choose ITB Packaging?

OUR PROMISE

ITB Packaging's innovative packaging divider systems can address our customers' challenges with total cost of ownership in packaging and optimize your supply chain by lowering costs, maximizing space, and reducing labor. We simplify your packaging process with customizable options, use recyclable materials, and provide quick turnarounds while delivering higher-quality protection for your parts and products.

YEAR FOUNDED

ITB Packaging was founded in 2011 and continues to grow in product lines, facilities, and technology, allowing us to provide solutions that solve our customers' challenges and pain points.

INDUSTRIES SERVED

E-Commerce, Automotive, Beauty and Personal Care, Electronics, Manufacturing, Food, Specialty Beverage, and Moving and Storage. We can provide briefs for each vertical market along with key case studies.

PROBLEMS WE SOLVE

ITB has substantial expertise and history in reducing product damage, along with reducing labor, storage, handling, and transportation costs. Our solutions tend to optimize the entire interior space of the container by eliminating the need for air cells and intersecting cells tied to die-cut corrugated or chip dividers and partitions.

VALUE ADDED SERVICES

Our design and customer care teams provide services, including design, quoting, and sampling of our innovative solutions. We also have a design guide we share with our channel partners and end-user customers.

PERSONNEL

ITB is well-staffed in design, quotation, manufacturing, quality, sales, and marketing, able to provide our customers with the high levels of service and solutions they expect from a packaging solutions provider.

9 Advantages of Using ITB Packaging Solutions

1. 100% recyclable, paper-based solutions to support sustainability initiatives
2. Maximizes packing density via flexible cell sizes, inner-leaf, and nesting capabilities
3. Collapsible single SKU carton means significant savings in freight, labor, and storage space
4. Eliminates time-consuming and costly die-cut processes
5. Provides excellent protection, minimizing the risk of damage during transit
6. Available in a wide variety of divider and box sizes and custom cell sizes within a single box
7. Easy-to-use, ergonomic design that increases productivity and ease of use for operators
8. Integrates into existing packaging processes, including automated and pick-and-pack
9. Efficient and productive processes that provide quick turnaround time



LOCATIONS

ITB has two primary locations in Michigan and a series of National distribution partners throughout the US, allowing us to supply a wide geographical footprint effectively.

FACILITIES

You're invited to schedule a tour of our facilities by contacting chelsey@itbpackaging.com.

QUANTITIES

ITB Packaging solutions eliminate the need for tooling or dies, offering greater flexibility, lower MOQs, and the ability to meet diverse customer needs across sizes and locations.

MADE IN THE USA

ITB Packaging's raw materials and supplies are all sourced in the US and meet our strict requirements on quality from our supplier network. Specifications and consistency are key features we demand from our valued supply partners.

EQUIPMENT

ITB has a series of custom-made automated ply-laying machines along with framing and divider insertion technology that provide capacity for growth via leveraging automation.

QUALITY CONTROL

We have a dedicated Quality Department, along with training and calibration of our equipment. Our ISO-9001 certification and annual review process mandate that we have the training and protocols in place to meet our valued customers' quality and consistency goals.

SAFETY

Our operations, industrial engineering, and quality teams implement safety protocols and equipment, such as light curtains, to minimize injuries and comply with OSHA standards.

TECHNICAL SPECS

ITB has extensive material data sheets and testing results in our library available upon request.

Our Packaging Solutions

ITB Packaging expendable solutions are 100% recyclable and are offered in two installation types:

In-The-Box: Pre-assembled partition systems that come already integrated inside corrugated boxes. Offered with optional Protectapak[®], our integrated top void fill for maximum protection.

Pop-N-Drop: Pre-assembled packaging dividers that easily pop open and drop into your expendable or returnable boxes, totes, and bulk bin containers.

Join the Packaging Revolution Today!

Contact ITB Packaging to get started.

[CONTACT US TODAY](#)

Your Top Questions Answered

WHAT ABOUT STACKABILITY?

In the context of e-commerce, boxes usually aren't stacked in a way that would necessitate the stacking strength provided by corrugated dividers. For warehousing or wholesale applications, the stacking strength is primarily influenced by the product inside the box rather than the type of divider used.

WHAT ABOUT PAPER THICKNESS AND PROTECTION?

Our packaging designs provide protection through separation and isolation and the built-in flexibility to absorb external shocks, unlike corrugated dividers that transfer shocks to the product. We offer custom samples for independent testing to demonstrate the protective features of our design. For product categories requiring more, we offer our [Protectapak®](#) integrated void fill for maximum protection.

ARE HEAVIER ITEMS SUPPORTED?

We offer solutions in various weights and designs to accommodate heavier shipments. Weight tests conducted on our Protectapak® designs have proven to support package weights up to 38 pounds, surpassing the demands of typical e-commerce packages. In other applications, the weight issue is generally negligible when boxes are properly stacked on pallets and proper ECT requirements of corrugated cartons are incorporated.

HOW DO YOUR PRICES COMPARE TO STANDARD CORRUGATED PARTITIONS?

In some cases, based on divider sizes and materials, our products may be priced somewhat higher due to their superior design. However, the overall labor, material handling, space, and shipping savings can easily offset the initial costs. These savings apply to all markets we serve, including e-commerce, where the improved unboxing experience could justify a higher price.

WHAT ABOUT TOP VOID FILL PROTECTION?

Our right-sized integrated cell dividers eliminate the need for extra dunnage for most products. However, when additional protection is needed, we offer custom designs to make our dividers shorter than the box's height and offer our [Protectapak®](#) solution for maximum protection.

WHAT ABOUT BOX COMPATIBILITY?

Most of our customers use Regular Slotted Containers (RSCs), which are the most cost-effective and versatile. We work with HSC style cartons as well.

DO YOU OFFER BRANDING AND PRINTING OPTIONS?

Our focus on sustainability is reflected in the use of ink-free, natural kraft paper for the majority of our customers. However, we can provide our solutions in white boxes with printing on the exterior or interior flaps of the box to satisfy branding needs for our consumer-facing customers.

WHAT ABOUT SCALABILITY, CONSISTENCY AND FREIGHT COSTS ACROSS GEOGRAPHIC LOCATIONS?

We can meet demands across most geographic locations through our ITB Packaging facilities and channel partners. Freight costs are an inevitable part of the supply chain, but our cost-effective solutions across other aspects (DIM weight, right-sizing, collapsible integrated single SKU) usually lead to net savings for our customers.

WHAT INDUSTRY CERTIFICATIONS DO YOU HAVE?

ITB Packaging is ISO 9001 certified. While ITB Packaging isn't ISO 14001 certified, we offer sustainable packaging options that can assist your company in achieving such certifications.

WHAT IF WE HAVE VARIED PRODUCT SIZES?

Our design team works closely with customers to create dividers that can accommodate a wide range of product sizes, offering optimal fit and protection levels for virtually all applications.

DOES YOUR PACKAGING INTEGRATE WITH AUTOMATED EQUIPMENT?

Our expendable packaging solutions are compatible with most automated equipment in many applications.